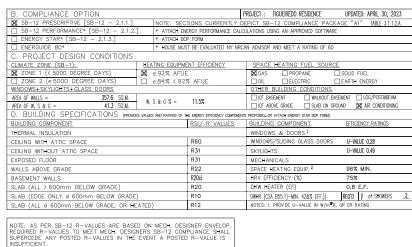


LAKE ST. CLAIR



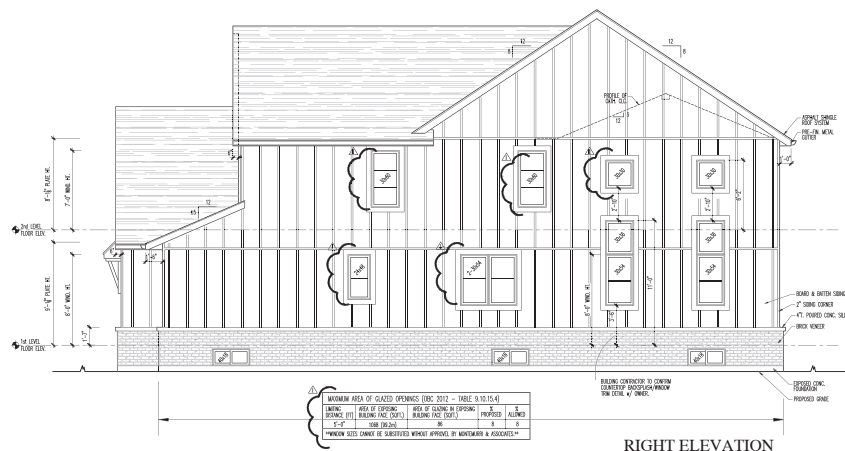


NOTE: AS PER SB-12 R-VALUES ARE BASED ON MECH. DESIGNER ENVELOP. REQUIRED R-VALUES TO MEET MECH. DESIGNERS SB-12 COMPLIANCE SHALL SUPERSEDE ANY POSTED R-VALUES IN THE EVENT A POSTED R-VALUE IS INSUFFICIENT.

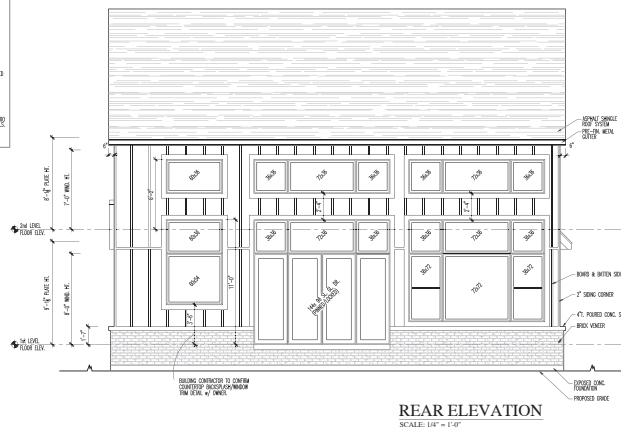
- [illegible]



FRONT ELEVATION
SCALE: 1/4" = 1'-0"



- GENERAL NOTES**
1. ALL EXTERIOR WALLS SHALL BE CONCRETE OR CMU.
 2. EXTERIOR WALLS SHALL BE FINISHED WITH STUCCO OR SIMILAR MATERIAL.
 3. ROOF VENTILATION PER IRC 9.18.2.
 4. ROOF SHALL BE FINISHED WITH ASPHALT/FLT SHINGLES OR SIMILAR MATERIAL.
 5. ROOF SHALL BE FINISHED WITH 1/2" MINIMUM THICKNESS OF GYPSUM BOARD OR SIMILAR MATERIAL.
 6. ROOF SHALL BE FINISHED WITH 1/2" MINIMUM THICKNESS OF GYPSUM BOARD OR SIMILAR MATERIAL.
 7. ROOF SHALL BE FINISHED WITH 1/2" MINIMUM THICKNESS OF GYPSUM BOARD OR SIMILAR MATERIAL.
 8. ROOF SHALL BE FINISHED WITH 1/2" MINIMUM THICKNESS OF GYPSUM BOARD OR SIMILAR MATERIAL.



- REVISIONS**
1. REVISED ELEVATION
 2. REVISED ELEVATION
 3. REVISED ELEVATION
 4. REVISED ELEVATION
 5. REVISED ELEVATION
 6. REVISED ELEVATION
 7. REVISED ELEVATION
 8. REVISED ELEVATION



NOT TO SCALE
ALL DIMENSIONS ARE IN FEET AND INCHES
UNLESS OTHERWISE SPECIFIED

Drawn By: LM (BCIN 31501)
Invent: Montemurri & Associates
Company BCIN #33339
April 26, 2023



Only valid with authorized signature
Montemurri & Associates

Date: PERMIT: APRIL 26, 2023
REVISION: JUNE 5, 2023

Sheet No. **A-2.02**

