

Lakeshore Fire Department Fire Master Plan

Emergency Management Group
September 2024

Fire Protection Model

The key focus of this Strategic Plan revolves around the three Lines of Defence for Public Safety

1. Public Fire Safety Education
2. Code Enforcement Through Inspections
3. Emergency Response Capabilities

At EMG we also consider the following as a key partner to the above three lines:

4. Emergency Management



Standards and Data Review

- The OFM guidelines,
- National Fire Protection Association Standards - 1201, 1720, etc.,
- Fire Underwriter's Survey
- Occupational Health and Safety Act
- Municipal standards and regulations
- Council approved policies
- Response data to identify call types, volume and locations.

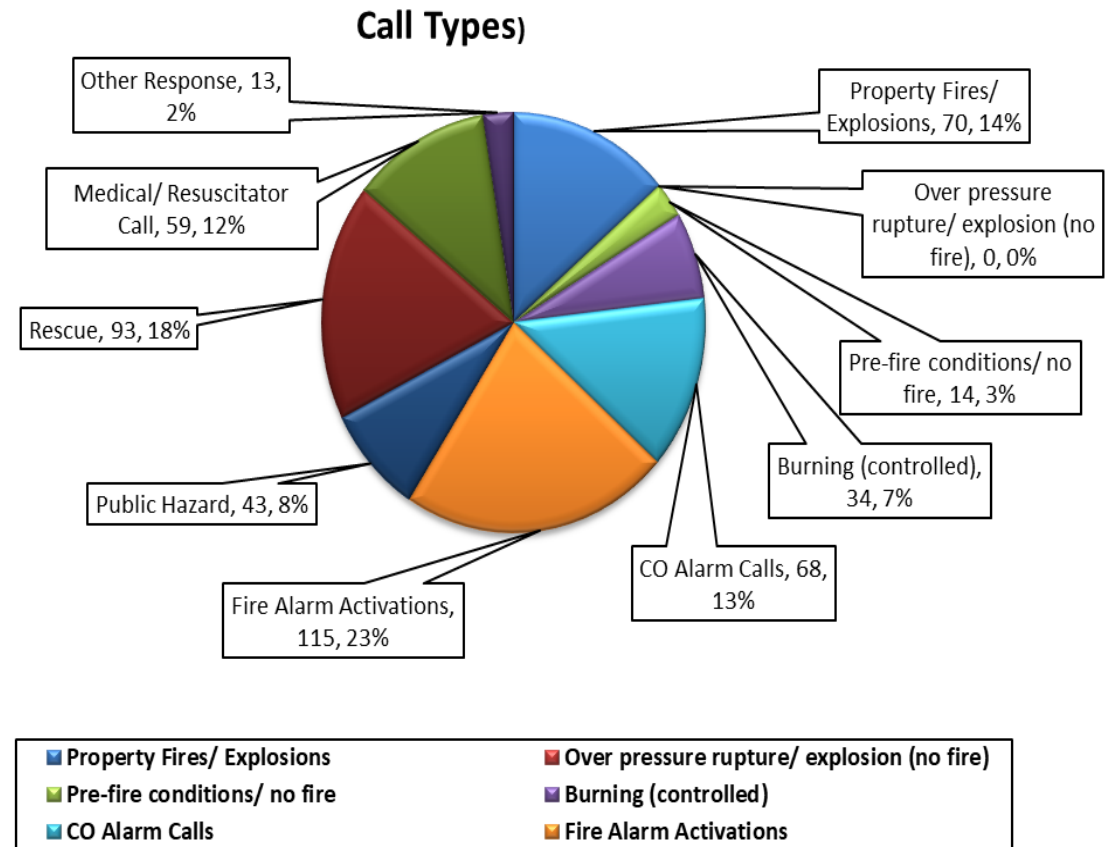
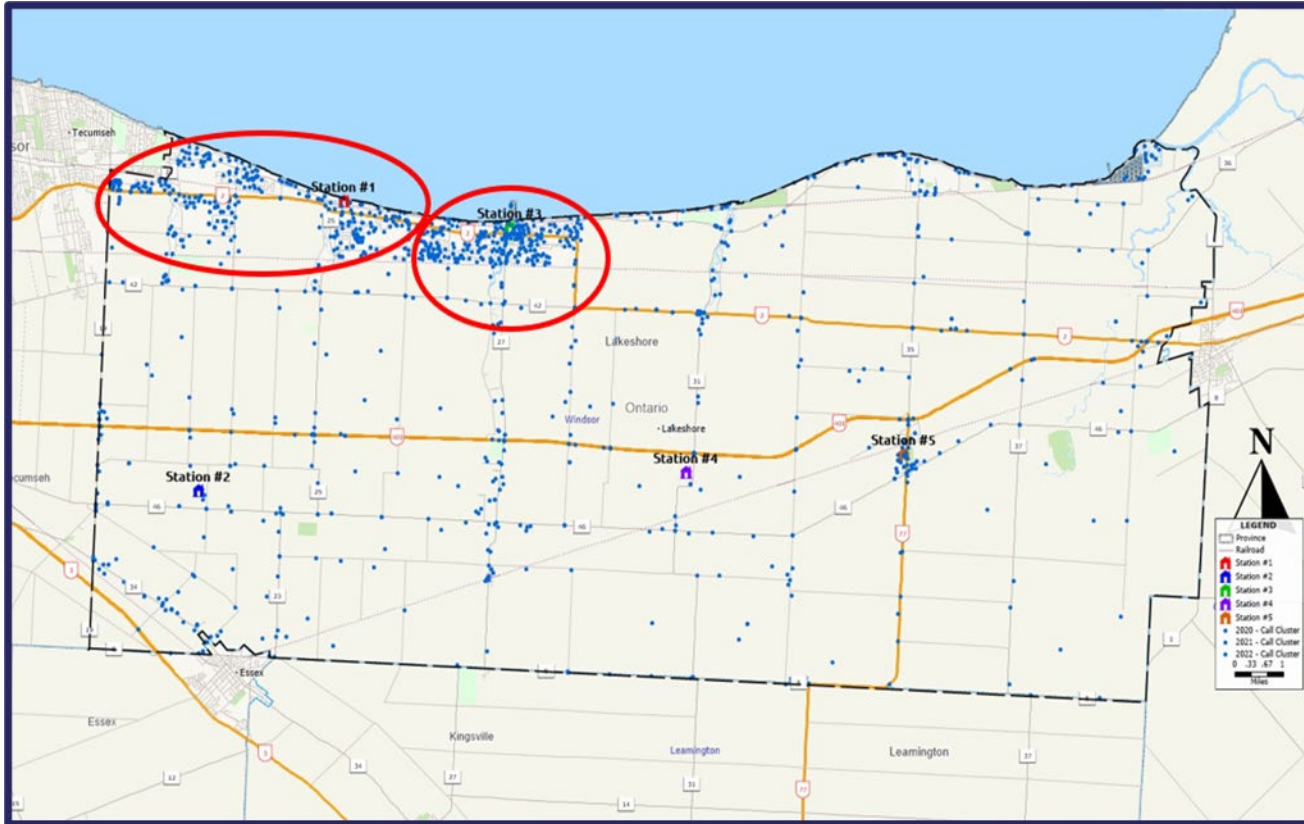
Recommendations Based On:

- Governance and By-laws
- Fire Prevention and Public Education
- Training Staff and Facilities
- Fire Stations
- Emergency Operations
- Communications/Dispatching
- Budget and Finance

Recommendations can be viewed as either operationally or strategic in their focus:

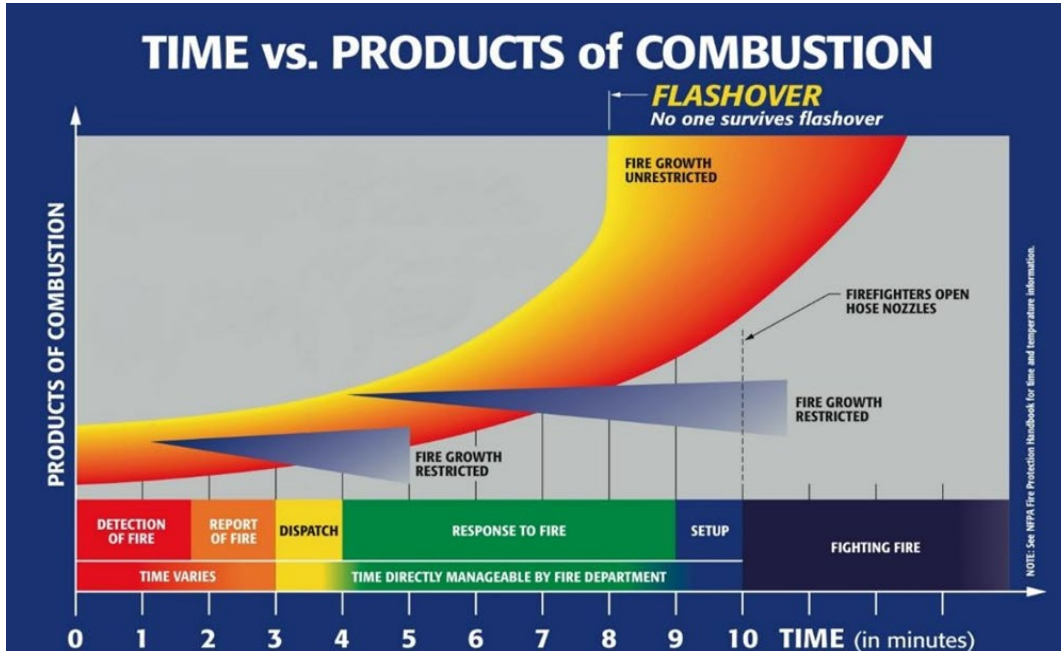
- **Operational** recommendations can be addressed mostly by staff and can have little to no cost for implementation if properly resourced.
- **Strategic** recommendations require large financial investment and possible Council approval, and these are discussed in more detail in this presentation.

Call Types and Locations



Helps to provide a picture of where the bulk of calls are occurring and if fire stations are well situated. Also is there a concern about types of calls and resources

Station Responses



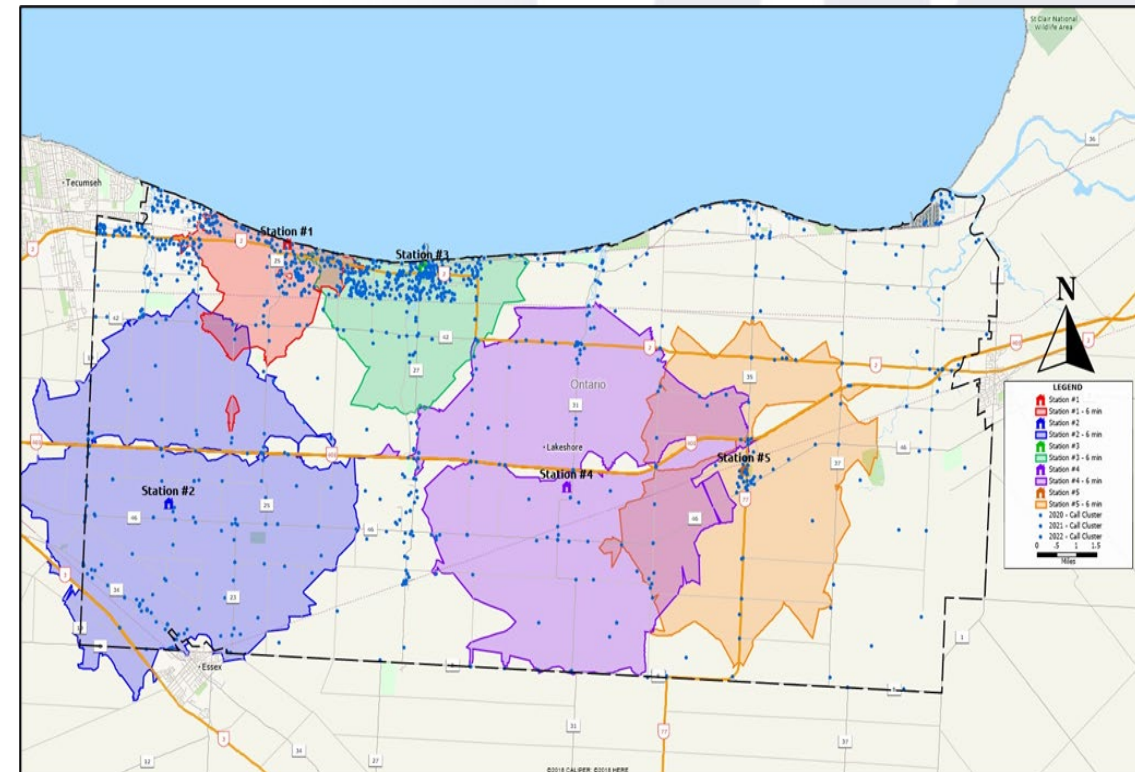
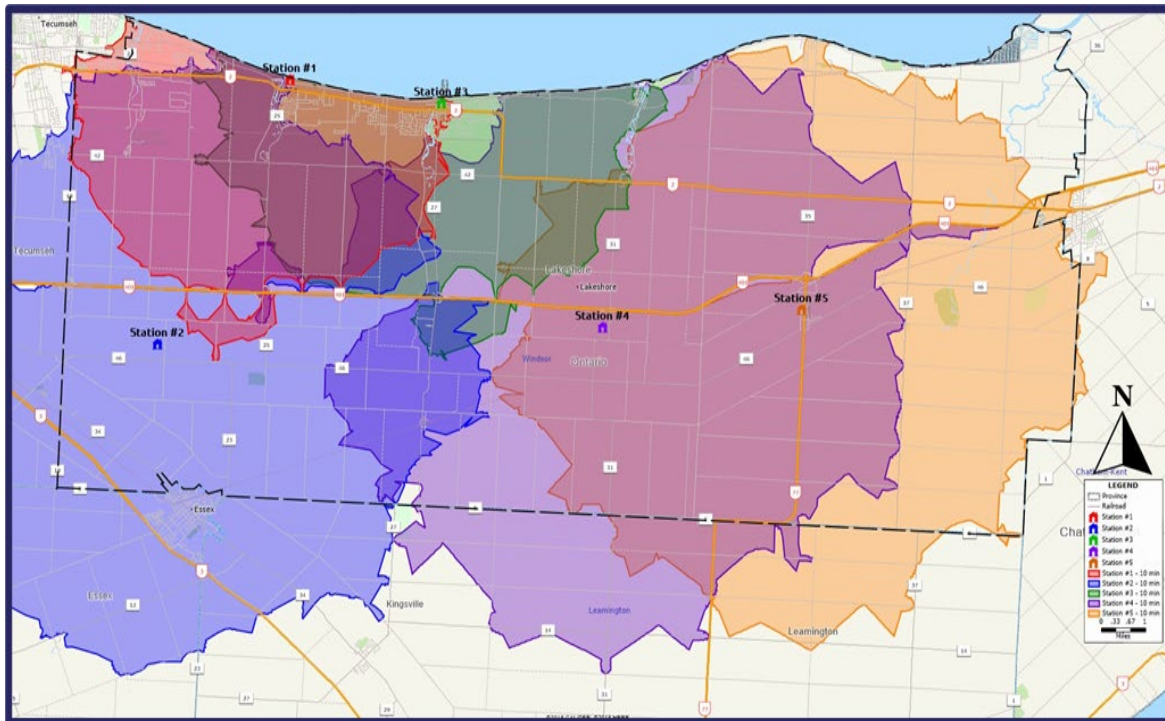
| Station | Year | | | | | | | |
|------------------|------------------------------|------------------|------------------------------|------------------|------------------------------|------------------|------------------------------|------------------|
| | 2019 | | 2020 | | 2021 | | 2022 | |
| | Average Number FF Responding | Number of Calls* | Average Number FF Responding | Number of Calls* | Average Number FF Responding | Number of Calls* | Average Number FF Responding | Number of Calls* |
| Station 1 | 5.81 | 206 | 5.90 | 174 | 5.31 | 207 | DNA | 212 |
| Station 2 | 5.39 | 61 | 5.63 | 49 | 5.40 | 50 | DNA | 52 |
| Station 3 | 4.94 | 113 | 5.84 | 129 | 5.34 | 126 | DNA | 136 |
| Station 4 | 4.34 | 50 | 5.41 | 37 | 5.85 | 48 | DNA | 39 |
| Station 5 | 4.95 | 90 | 4.90 | 88 | 5.35 | 86 | DNA | 70 |
| Average # of FFs | 5.08 | 553 | 5.53 | 481 | 5.45 | 526 | DNA | 604 |

- Flashover chart identifies the need for a quick and FULL response.
- Response numbers of Volunteer Firefighters per call by station is a challenge for the department.
- Three-year response numbers – increasing in volume and response times annually. Can equate to VFF **Burnout**

Station Responses

Fire Stations Response Zones:

- Standard 10-minute response zone (minus 4-minutes to fire station)
- Actual 6-minute response zone (minus 8-minutes to fire station)



Data Analysis

Fire Stations and Response Data:

EMG assessed present station response abilities due to station and call locations, staffing and response times, along with

- Identifying where population growth is to occur and how this may affect call volumes
- Multiyear assessment of call volumes to identify where the increases are occurring.
 - As a result of the growth and call volumes, EMG presented recommendations on future staffing models.
 - ***Increase daytime capabilities by hiring two full-time day crews to eventually create 24/7 full time coverage.***

Fire Stations



Fire Stations



Bunker Gear Exposed to diesel exhaust as some of the stations even with the exhaust capture system.



Storage & Office Space Challenges



Proper Shower and Decontamination Facilities is not available at all the stations

Consideration for fire stations to accommodate future full-time staffing

Overview of the key Strategic Recommendations

Staff Increases:

- Increase administration support for each of the divisions.
 - Hire an additional Administrative Assistant
- Add position of full-time Training Officer to address OFM requirements.
- Increase daytime capabilities by hiring two full-time day crews to eventually create 24/7 full time coverage.

Health and Safety:

- Address the list of health and safety concerns noted in the report, such as diesel exhaust contamination, and storage/office space.

Overview of the Strategic Recommendations

Department Facilities (fire stations) and Vehicles

- Ensure fleet has spare pumper and elevated device as recommended by FUS.
- Review of cost projects for the replacement of SCBA and rescue truck
 - Present estimates are low based on current costs.

Strategic Priorities

- By-law updates
- Development and utilization of training opportunities(OFM training requirements).

Next Steps

- Review the recommendations and create a plan for moving forward
 - The suggested timelines are identifying “implementations times”, not completion times.
- Feasibility study to be conducted relating to the fire station recommendations
 - Cost and related timelines for implementation, and
 - Staffing options – i.e., type of full-time complement and the timing of it.
- Document the implementation and completion of the recommendations

Conclusion

It must be noted that during our assessment, it was quite evident that:

- The Fire Service is made up of a group of dedicated, professional personnel who are committed to improving the level of service to meet the needs of the community.
- We would like to thank everyone who assisted in the development of this master plan and the community risk assessment.

Final Note:

- ***This presentation has been a high-level overview of the Strategic items that would require Council approval. There were also many operational recommendations.***

Questions?

**Emergency Management Group
Lakeshore Fire Master Plan Presentation
September 2024**