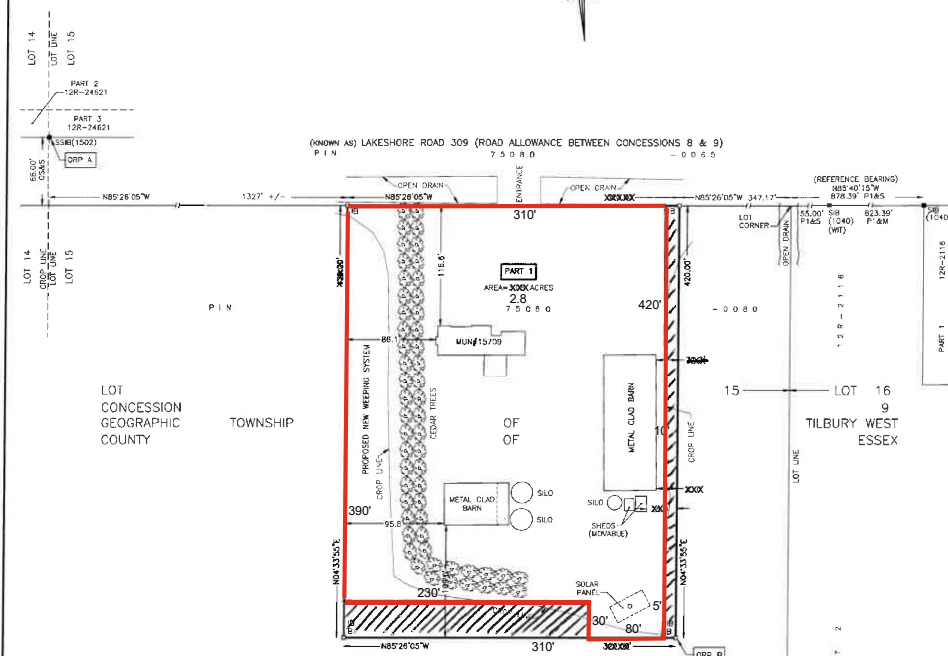


Lot to be severed is outlined in red



PLAN SCHEDULE			
PART	LOT	CONCESSION	PIN
1	PART OF 15	9	PART OF 75080-0080
PART 1 COMPRISES PART OF PIN 75080-0080			



**PLAN OF SURVEY  
OF PART OF LOT 15  
CONCESSION 9  
GEOGRAPHIC TOWNSHIP OF TILBURY WEST  
NOW IN THE  
TOWN OF LAKESHORE  
COUNTY OF ESSEX**

SCALE: 1"=60'

THE INTENDED PLOT SIZE OF THIS PLAN IS 22' IN WIDTH BY 17' IN HEIGHT WHICH PLOTTED AT A SCALE OF 1"=60'

**SURVEYOR'S CERTIFICATE**

I CERTIFY THAT:

- THIS SURVEY AND PLAN ARE CORRECT AND IN ACCORDANCE WITH THE SURVEYORS ACT, THE SURVEYORS ACT, THE LAND TITLES ACT AND THE REGULATOR'S GUIDE UNDER THESE.
- THE SURVEY WAS COMPLETED ON THE 16th DAY OF OCTOBER, 2023.

(DATE) S.D. HOOK  
CHATHAM TOWN SURVEYOR

**NOTES**

BEARINGS ARE UTM GRID DERIVED FROM OBSERVED REFERENCE POINTS & ARE IN 2D PLANE. THE BENCHMARK (BM) OBSERVATIONS USE 2011 NAD83 (EPSG) (2011) CAN-NET.

COORDINATES ARE OBTAINED AND CAN BE CONVERTED TO GRID BY MULTIPLYING BY THE CHANGING SCALE FACTOR OF 0.99971717.

REFERENCE REFERENCE POINTS (RIP) A & B UTM ZONE 18, UTM (GARS) (2011) COORDINATES TO LOCAL ACCURACY FOR SEC. 14 (3) OF O. REG. 218/13.

POINT ID	NORTHING	EASTING
DRP A	15333101.99	1235354.99
DRP B	15332488.35	1235958.33

COORDINATE QUANTITY, IF NECESSARY, BE USED TO RE-ESTABLISH CORNERS OR BOUNDARIES SHOWN ON THIS PLAN.

FOR BEARING COMPASSION, A ROTATION OF 0.00730° CLOCKWISE WAS APPLIED TO PLAN 10R-2116.

B	CONCRETE	FOUND
L	CONCRETE	SLAB
M	CONCRETE	REIN. BARS
SB	CONCRETE	STANDARD REIN. BARS
SP	CONCRETE	SPOT FINISHING REIN. BARS
PL	CONCRETE	PLASTIC BARS
W	CONCRETE	WEAPONS
WH	CONCRETE	WEAPONRY
S	CONCRETE	SET
PL	CONCRETE	PROPERTY IDENTIFIED NUMBER
DRP	CONCRETE	DESCRIPTIVE REFERENCE POINT

DRAWN BY	C.A.	<p><b>HOOK &amp; TODGHAM SURVEYING INCORPORATED</b></p> <p>CHATHAM ONTARIO PHONE: 1-519-254-1122 EMAIL: HOOKTOD@TODGHAM.COM</p>
CHECKED BY	S.D.H. / C.A.	
PLAN NUMBER	23156	

DISPARITIES AND COORDINATES SHOWN ON THIS PLAN ARE IN FEET AND CAN BE CONVERTED TO METERS BY MULTIPLYING BY 0.3048.