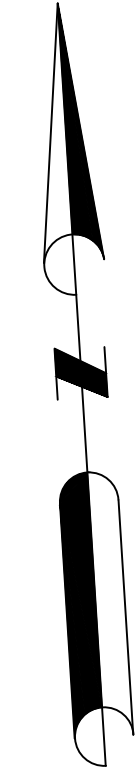


COORDINATES ARE DERIVED FROM GRID OBSERVATIONS USING THE SMART-NET NETWORK SERVICE AND ARE REFERRED TO UTM ZONE 17 (81° WEST LONGITUDE) NAD83 (CSRS) (2010.0). COORDINATE VALUES ARE TO AN URBAN ACCURACY IN ACCORDANCE WITH SECTION 14(2) O. REG 216/10

POINT ID	NORTHING	EASTING
ORP-A	4683375.939	355118.016
ORP-B	4683350.940	355515.288

COORDINATES CANNOT, IN THEMSELVES, BE USED TO RE-ESTABLISH CORNERS OR BOUNDARIES SHOWN ON THIS PLAN.



AREAS
AREAS SHOWN ON THIS PLAN ARE IN SQUARE METRES AND CAN BE CONVERTED TO SQUARE FEET BY MULTIPLYING BY 10.76391.

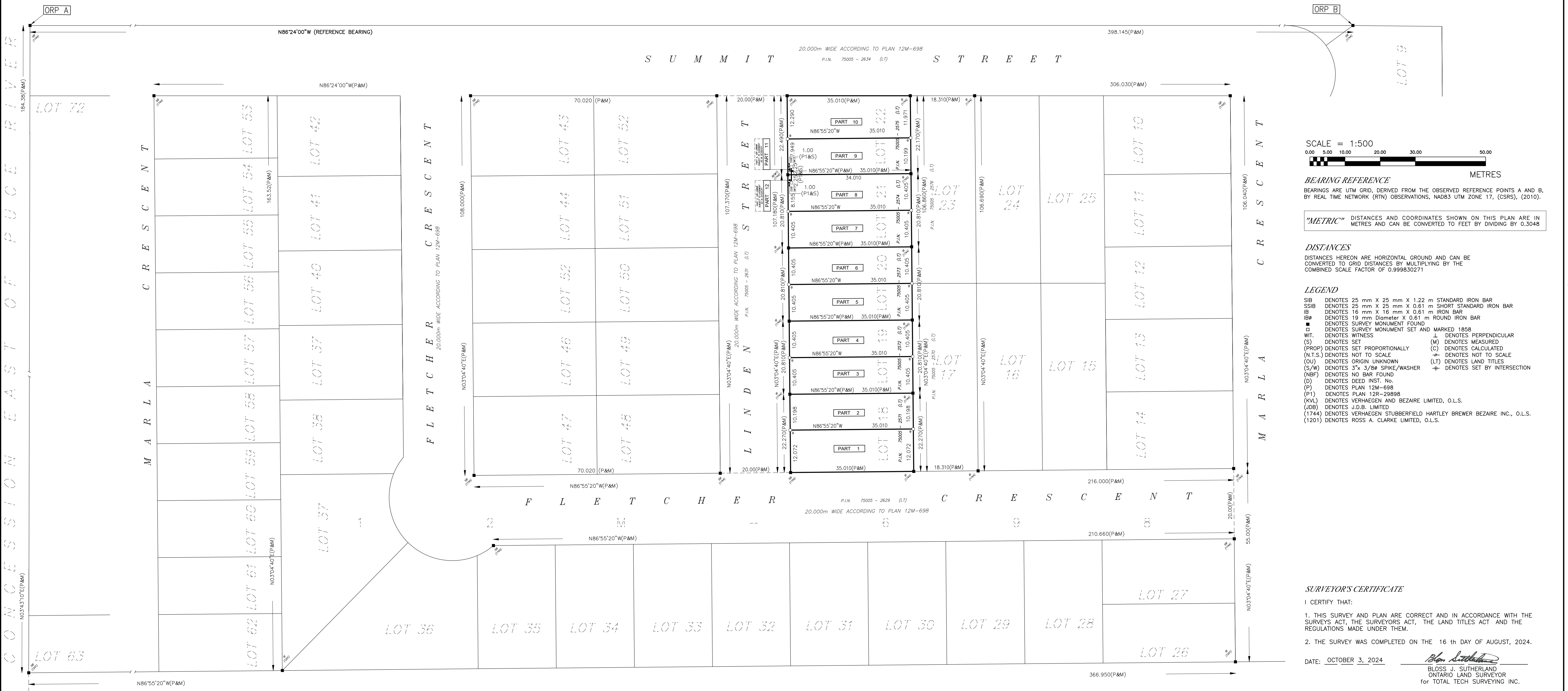
PARTS		SCHEDULE							
PART	LOT	PLAN	P.I.N.	AREA	PART	LOT	PLAN	P.I.N.	AREA
1	PART OF LOT 18	12M-698	PART OF 75005-2571(LT)	422.6 Sq.m.	4	PART OF LOT 19	12M-698	PART OF 75005-2572(LT)	364.3 Sq.m.
2	PART OF LOT 18		PART OF 75005-2571(LT)	357.0 Sq.m.	5	PART OF LOT 20		PART OF 75005-2573(LT)	364.3 Sq.m.
3	PART OF LOT 19		PART OF 75005-2572(LT)	364.3 Sq.m.	6	PART OF LOT 20		PART OF 75005-2573(LT)	364.3 Sq.m.
					7	PART OF LOT 21		PART OF 75005-2574(LT)	364.3 Sq.m.
					8	PART OF LOT 21		PART OF 75005-2574(LT)	362.0 Sq.m.
					9	PART OF LOT 22		PART OF 75005-2575(LT)	354.8 Sq.m.
					10	PART OF LOT 22		PART OF 75005-2575(LT)	424.7 Sq.m.
					11	PART OF LOT 22		PART OF 75005-2575(LT)	2.3 Sq.m.
					12	PART OF LOT 21		PART OF 75005-2574(LT)	2.3 Sq.m.

PARTS 1 and 2 (INCLUSIVE) COMPRISES ALL OF PIN 75005-2571(LT)
PARTS 3 and 4 (INCLUSIVE) COMPRISES ALL OF PIN 75005-2572(LT)
PARTS 5 and 6 (INCLUSIVE) COMPRISES ALL OF PIN 75005-2573(LT)
PARTS 7, 8 and 9 (INCLUSIVE) COMPRISES ALL OF PIN 75005-2574(LT)
PARTS 10 and 11 (INCLUSIVE) COMPRISES ALL OF PIN 75005-2575(LT)
PARTS 12 ARE SUBJECT TO EASEMENT AS IN INST. NO. CE1201311

I REQUIRE THIS PLAN TO BE DEPOSITED UNDER THE LAND TITLES ACT
DATE: OCTOBER 3, 2024
Bloss J. Sutherland
BLOSS J. SUTHERLAND
ONTARIO LAND SURVEYOR

PLAN 12R -
RECEIVED AND DEPOSITED
DATE: _____
REPRESENTATIVE FOR THE LAND REGISTRAR FOR THE LAND TITLES DIVISION OF ESSEX (12)

PLAN OF SURVEY
OF
LOTS 18 to 22, PLAN 12M-698
(IN THE GEOGRAPHIC TOWNSHIP OF MAIDSTONE)
IN THE
MUNICIPALITY OF LAKESHORE
COUNTY OF ESSEX



SCALE = 1:500
0.00 5.00 10.00 20.00 30.00 50.00
METRES

BEARING REFERENCE
BEARINGS ARE UTM GRID, DERIVED FROM THE OBSERVED REFERENCE POINTS A AND B, BY REAL TIME NETWORK (RTN) OBSERVATIONS, NAD83 UTM ZONE 17, (CSRS), (2010).

"METRIC" DISTANCES AND COORDINATES SHOWN ON THIS PLAN ARE IN METRES AND CAN BE CONVERTED TO FEET BY DIVIDING BY 0.3048

DISTANCES
DISTANCES HEREON ARE HORIZONTAL GROUND AND CAN BE CONVERTED TO GRID DISTANCES BY MULTIPLYING BY THE COMBINED SCALE FACTOR OF 0.999830271

LEGEND
SIB DENOTES 25 mm X 25 mm X 1.22 m STANDARD IRON BAR
SSIB DENOTES 25 mm X 25 mm X 0.61 m SHORT STANDARD IRON BAR
IB DENOTES 16 mm X 16 mm X 0.61 m IRON BAR
IBØ DENOTES 19 mm Diameter X 0.61 m ROUND IRON BAR
■ DENOTES SURVEY MONUMENT FOUND
□ DENOTES SURVEY MONUMENT SET AND MARKED 1858
WIT. DENOTES WITNESS
S DENOTES SET
(PROP) DENOTES SET PROPORTIONALLY
(N.T.S.) DENOTES NOT TO SCALE
(O) DENOTES ORIGIN UNKNOWN
(S/W) DENOTES 3" x 3/8" SPIKE/WASHER
(NBF) DENOTES NO BAR FOUND
(D) DENOTES DEED INST. NO.
(P) DENOTES PLAN 12M-698
(P1) DENOTES PLAN 12R-29898
(KVL) DENOTES VERHAEGEN AND BEZAIRE LIMITED, O.L.S.
(JDB) DENOTES J.D.B. LIMITED
(1744) DENOTES VERHAEGEN STUBBERFIELD HARTLEY BREWER BEZAIRE INC., O.L.S.
(1201) DENOTES ROSS A. CLARKE LIMITED, O.L.S.

SURVEYOR'S CERTIFICATE
I CERTIFY THAT:
1. THIS SURVEY AND PLAN ARE CORRECT AND IN ACCORDANCE WITH THE SURVEYORS ACT, THE LAND TITLES ACT AND THE REGULATIONS MADE UNDER THEM.
2. THE SURVEY WAS COMPLETED ON THE 16 th DAY OF AUGUST, 2024.
DATE: OCTOBER 3, 2024
Bloss J. Sutherland
BLOSS J. SUTHERLAND
ONTARIO LAND SURVEYOR
for TOTAL TECH SURVEYING INC.

THIS PLAN OF SURVEY RELATES TO AOLS PLAN SUBMISSION FORM NUMBER 2214954

Total Tech Surveying Inc.
341 Talbot St. N.
Units 2 & 3
Essex, ON N8M 2W3
(519) 776-9887

Drawn by: W.R.G. Checked by: B.J.S. Job No: 2024-174-K Plan File No: D-460-K