

HYDRO ONE INVESTMENTS IN THE TOWN OF LAKESHORE



Presentation to Lakeshore Council

Daniel Levitan, Vice President of Stakeholder Relations

Sonny Karunakaran, Director of Strategic Projects

Hydro One Networks Inc.

OVERVIEW

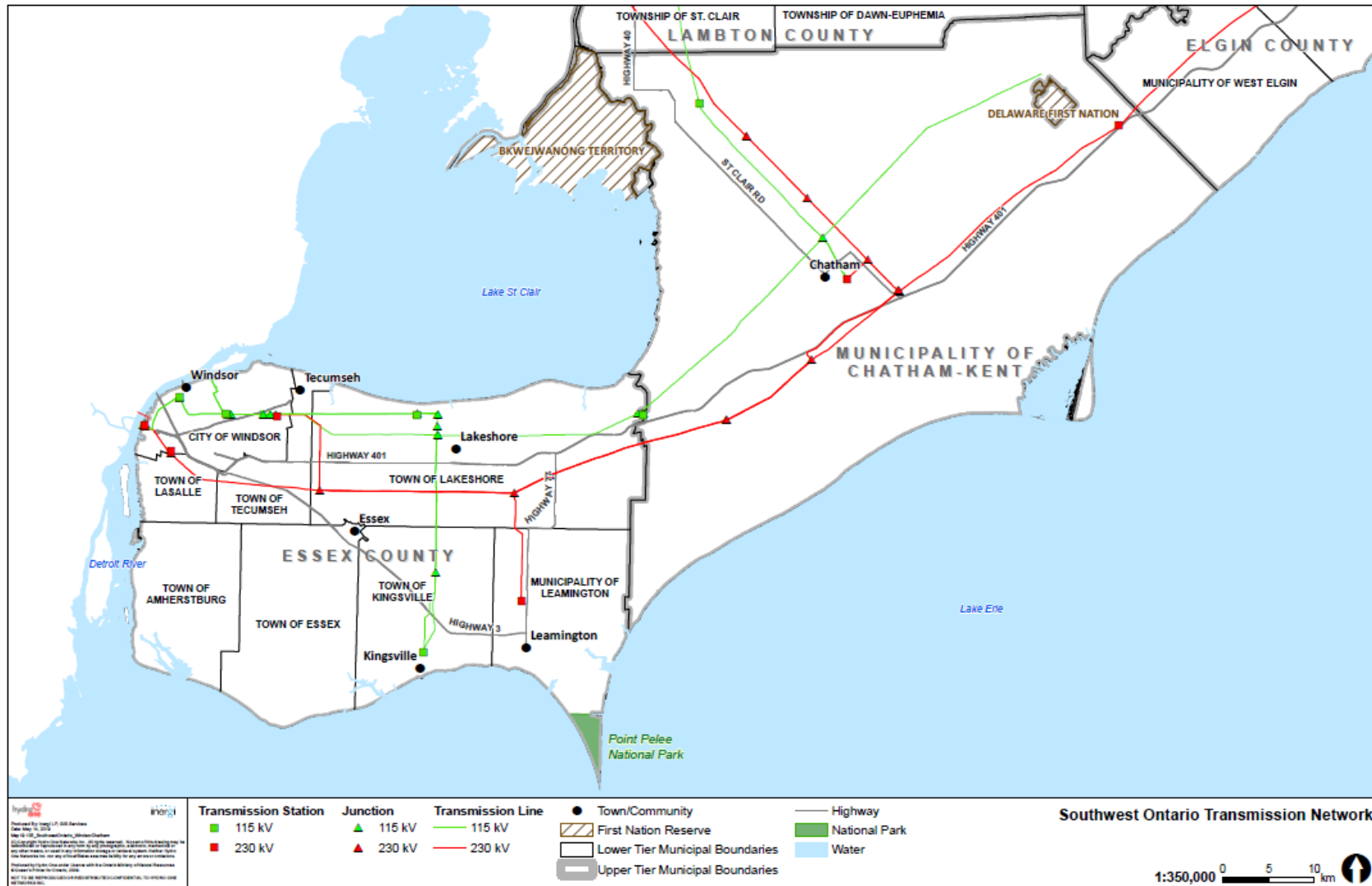
- Investing in southwestern Ontario
- Maps of the electricity system in southwestern Ontario
- Overview of projects in the Town of Lakeshore
- Transmission system investments
- Distribution system investments
- Working together with E.L.K. Energy Inc.



ENERGIZING LIFE IN SOUTHWESTERN ONTARIO

- Hydro One has a long history of energizing life in southwestern Ontario. We want to continue this tradition by strengthening the transmission and distribution system that powers the homes and businesses in the Town of Lakeshore, as well as the rest of Essex County.
- Approximately \$193 million has been invested in the area to-date through the construction of a new transmission station. Over the next several years we will continue to make significant investments to the infrastructure in the area.
- Engagement and consultation is a top priority for Hydro One. This is why we are committed to working and collaborating with local communities, residents, businesses and community groups as we build new infrastructure.

TRANSMISSION NETWORK IN SOUTHWESTERN ONTARIO



HYDRO ONE DISTRIBUTION NETWORK IN LAKESHORE

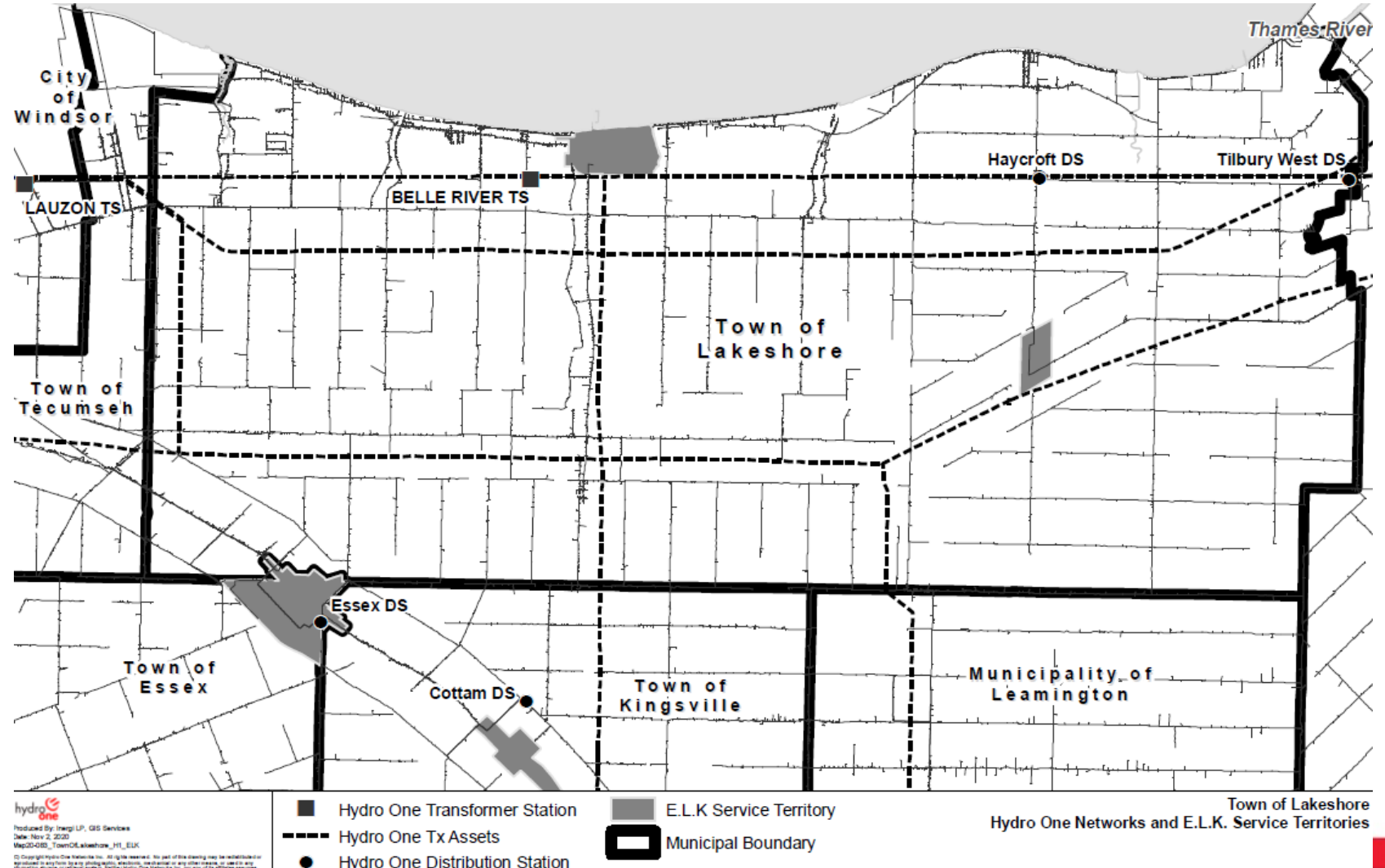
Stations supplying power to Lakeshore

Transformer stations:

- Belle River TS
- Lauzon TS

Distribution Station

- Essex DS
- Haycroft DS
- Tilbury West DS
- Cottam DS



TOWN OF LAKESHORE: FUTURE INVESTMENTS

TRANSMISSION SYSTEM INVESTMENTS

- Lakeshore Switching Station (SS)
- South Middle Road Transformer Station (TS)
- Proposed Chatham to Lakeshore Line

DISTRIBUTION SYSTEM INVESTMENTS

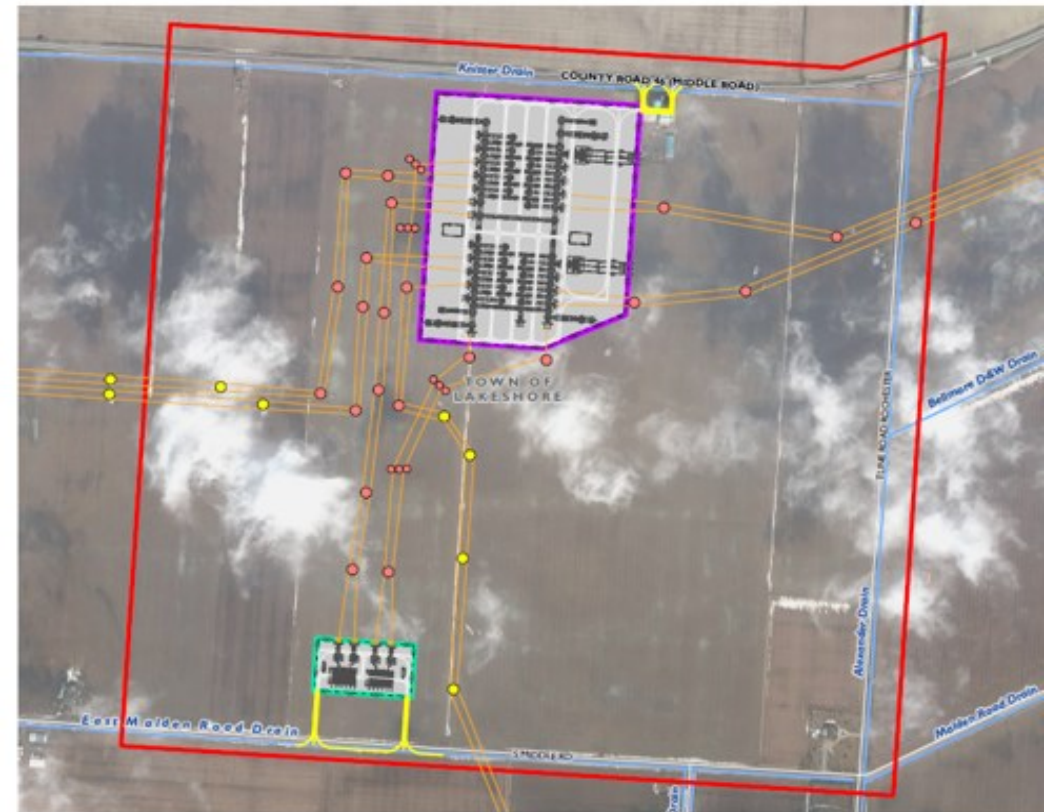
- South Middle Road TS distribution lines
- Manning Road and Essex County Road load growth
- Patillo Rd load growth
- County Road 42 widening

Benefits to the local community:

- Bring more power to the region connecting more homes and businesses
- Improve reliability on the electricity system

LAKESHORE SWITCHING STATION & SOUTH MIDDLE ROAD TRANSFORMER STATION

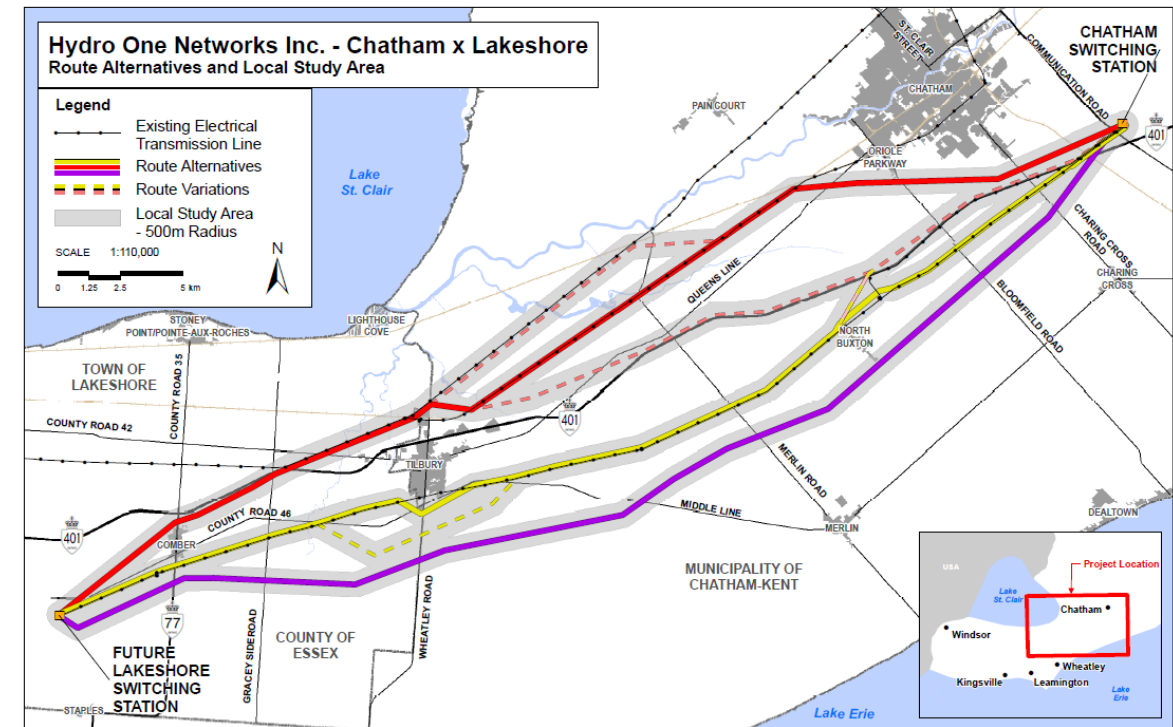
- Hydro One is constructing a new transformer and switching station to meet the increased demand for power in the region.
- The new 230 kV switching station and a separate 230/27.6 kV transformer station will be located on Middle Road and South Middle Road.
- Hydro One completed a Class Environmental Assessment for the new station in January 2020.
- Construction began in fall 2020, and is anticipated to be completed at the end of 2023.



Switching station is located on Middle Rd
Transformer station is located on South Middle Rd

CHATHAM TO LAKESHORE TRANSMISSION LINE

- To meet anticipated growth in the region, Hydro One is proposing to build a new double circuit 230kV transmission line between from our Chatham-Kent switching station to the future Lakeshore switching station.
- This line will add 400MW of power to the region, or enough to energize a city the size of Windsor.
- Hydro One has initiated a Class Environmental Assessment and consultation process.
- It is anticipated this line will be in-service prior to the end of 2025.



ENVIRONMENTAL ASSESSMENT CHATHAM TO LAKESHORE TRANSMISSION LINE

The Class Environmental Assessment (Class EA) for Minor Transmission Facilities sets out a planning and decision-making process for projects with predictable environmental effects that can be mitigated.

KEY COMPONENTS

- Consultation with Indigenous communities, community members, elected officials, interest groups and government agencies
- Collection of environmental inventory
- Identification and evaluation of alternative methods
- Identification of potential effects and mitigation measures
- Selection of a preferred alternative
- A draft Environmental Study Report (ESR) made available for a 30-day public review and comment period; and
- Submission of Final ESR and Statement of Completion

PROJECT TIMELINES

CHATHAM TO LAKESHORE TRANSMISSION LINE



Environmental studies and preferred route selection

Real estate outreach

Continued First Nations and stakeholder engagement opportunities (i.e. meetings with property owners, local businesses, associations etc.)

ENGAGEMENT & FEEDBACK

Hydro One is committed to ongoing engagement and consultation.

TO DATE WE'VE:

- Held 2 virtual information sessions with community members reaching more than 4,000 households.
- Held 2 virtual information sessions with First Nations communities reaching more than 200 households.
- Held 2 virtual Technical Advisory Committee workshops with provincial and federal agencies, First Nations community representatives, and technical and industry stakeholders.
- Corresponded via phone or email with more than 100 community members.
- Organized regular and frequent engagement with local elected officials.
- Engaged with eight First Nations communities.
- Distributed more than 60,000 flyers.

KEY FEEDBACK WE'VE HEARD:

- Protecting agricultural features and operations should be considered when selecting the route.
- Farming practices should be considered as part of the solution used to deliver this project.
- The former rail corridor should be reconsidered as a potential route alternative.

LAKESHORE: DISTRIBUTION SYSTEM INVESTMENTS

The listed distribution projects are in various stages of planning and design. These projects will offer additional capacity, improve service and reliability, and directly support the growth needs of local businesses.

PROJECT	PURPOSE
SOUTH MIDDLE RD TS FEEDERS	New distribution line feeders will extend from the South Middle Rd TS to support regional growth and economic development.
MANNING RD AND ESSEX COUNTY RD 22 LOAD GROWTH	New distribution line will improve reliability in the Town of Lakeshore and directly support the load growth in the Amy Croft Dr. and Lanuoe St. areas.
PATILLO RD LOAD GROWTH	New distribution line will supply load growth near Patillo Rd industrial/commercial developments as well as provide reliability improvements in the Town of Lakeshore.
COUNTY ROAD 42 ROAD WIDENING	The distribution lines require relocation to accommodate the County Rd 42 widening.

LAKESHORE AREA DISTRIBUTION SYSTEM MAINTENANCE

- Hydro One regularly assesses the condition of its distribution assets, plans annual maintenance, and makes repairs as needed.
- Maintenance activities include tree clearing, line patrol, infrared scans, replacement of damaged assets such as switches, transformers, meters, insulators, guy wires, etc.



WORKING WITH E.L.K. ENERGY

E.L.K. Energy and Hydro One have developed a trust based partnership, keeping the customer at the center of every discussion.

Meet regularly to:

- Plan investments to meet the load growth needs in the area
- Develop investment plans to ensure improved reliability for our customers
- Share energy demand information to contribute to the regional planning process
- Work together in finding optimal solutions for temporary power interruptions



THANK YOU

Questions?

