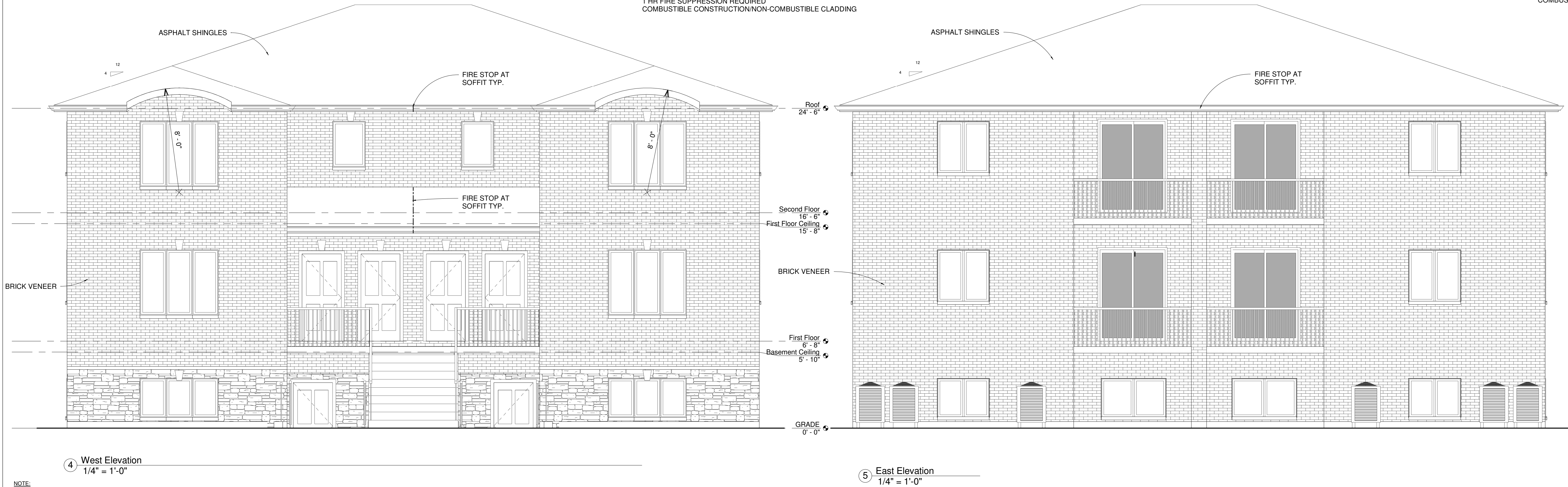


SPATIAL SEPARATION:
AREA OF EBF. PER COMPARTMENT 490 sf.
LIMITING DISTANCE 9'-10"
PERMITTED OPENING 93 sf. (19%)
PROPOSED OPENING 16 sf.
1 HR FIRE SUPPRESSION REQUIRED
COMBUSTIBLE CONSTRUCTION/NON-COMBUSTIBLE CLADDING

SPATIAL SEPARATION:
AREA OF EBF. PER COMPARTMENT 490 sf.
LIMITING DISTANCE 9'-10"
PERMITTED OPENING 93 sf. (19%)
PROPOSED OPENING 16 sf.
1 HR FIRE SUPPRESSION REQUIRED
COMBUSTIBLE CONSTRUCTION/NON-COMBUSTIBLE CLADDING



NOTE:
THE CONTRACTOR SHALL NOTIFY THE
OWNER OF ANY DISCREPANCIES PRIOR
TO CONSTRUCTION OR FABRICATION.
WINDOWS ARE REPRESENTATIVE DUE
TO MANY STYLES AND SIZES AVAILABLE.
THEREFORE THE CONTRACTOR AND
THE WINDOW SUPPLIER ARE TO
ENSURE FIT AND O.B.C. COMPLIANCE OF
DOORS AND WINDOWS CONFORMING
TO THE ENERGY PERFORMANCE
EVALUATION STANDARD CAN/CSA-
A440.2.
DIMENSIONS ALWAYS TAKE
PRECEDENCE OVER SCALED
MEASUREMENTS.
INTERIOR DOORS TO BE 32" WIDE UNO.
INTERIOR DOORS TO BE 80" TALL, TYP.

GA DESIGNS
BCIN: 112721
gregoryamaral@yahoo.com

Modern Solutions
Group Inc.
0 Railway Ave, Belle Rvier
Elevations

Project number	19
Date	Jan. 12, 2021
Drawn by	GA
Checked by	RB
Scale	1/4" = 1'-0"

NOT FOR CONSTRUCTION