

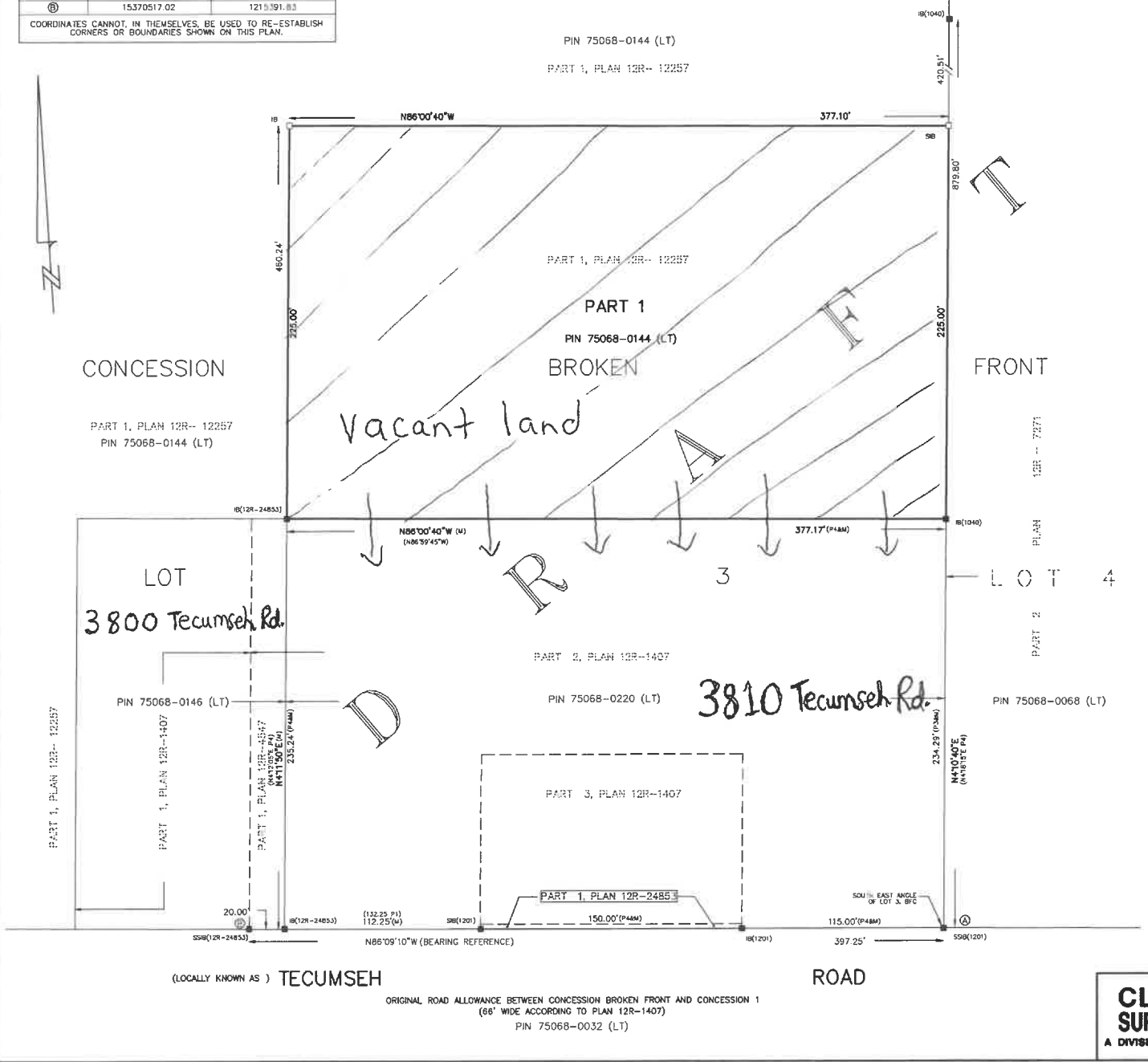
COORDINATES BELOW ARE DERIVED FROM NETWORK RTK GPS OBSERVATIONS (TOPNET) AND ARE REFERRED TO UTM ZONE 17, NAD83 (CSRS) (2010.0).		
COORDINATES COMPLY WITH THE RURAL ABSOLUTE ACCURACY PER SEC. 14(2) OF O. REG. 216/10.		
POINT ID	NORTHING	EASTING
①	15370490.38	1215788.10
②	15370517.02	1215791.83
COORDINATES CANNOT, IN THEMSELVES, BE USED TO RE-ESTABLISH CORNERS OR BOUNDARIES SHOWN ON THIS PLAN.		

\* THIS PLAN IS COMPILED FROM OFFICE INFORMATION AND NEEDS TO BE FIELD VERIFIED IF PLAN IS APPROVED BY THE TOWN OF LAKESHORE. \*

SCHEDULE				
PART	LOT/BLOCK	PLAN	PIN	AREA (ACRES)
1	PART OF LOT 3	CONCESSION BROKEN FRONT	PART OF PIN 75068-0144 (LT)	1.95

GEOGRAPHIC TOWNSHIP OF TILBURY NORTH

PART 1 COMPRISE PART OF PIN 76068-0144 (LT).



PLAN OF SURVEY OF  
PART OF LOT 3  
CONCESSION BROKEN FRONT  
GEOGRAPHIC TOWNSHIP OF TILBURY NORTH  
TOWN OF LAKESHORE  
COUNTY OF ESSEX

SCALE 1" = 40' FEET  
0 5 10 15 20 40 80 160 FEET  
THE INTENDED PLOT SIZE OF THIS PLAN IS 24inches IN WIDTH BY 18inches IN HEIGHT WHEN PLOTTED AT A SCALE OF 1"=40' FEET.  
SURVEYORS ON SITE INC.

LEGEND	
□	MONUMENT PLANTED
■	MONUMENT FOUND
SIB	STANDARD IRON BAR
SSIB	SHORT STANDARD IRON BAR
IB	IRON BAR
M	MEASURED
P1	PLAN 12R-1407
P2	PLAN 12R-4547
P3	PLAN 12R-7271
P4	PLAN 12R-24853
1201	CLARKE SURVEYORS INC.
1040	WILLIAM L. SETTERINGTON LTD.

NOTES  
DISTANCES AND COORDINATES SHOWN ON THIS PLAN ARE IN METRES AND CAN BE CONVERTED TO FEET BY DIVIDING BY 0.3048.  
DISTANCES ON THIS PLAN ARE HORIZONTAL GROUND DISTANCES AND CAN BE CONVERTED TO GRID DISTANCES BY MULTIPLYING BY THE AVERAGE COMBINED SCALE FACTOR OF 0.999784100.

BEARINGS ARE UTM GRID DERIVED FROM NETWORK RTK GPS OBSERVATIONS (TOPNET) ON MONUMENTS ① AND ② AS SHOWN HEREON, HAVING A GRID BEARING OF N86°09'10"W, NAD83 CSRS (2010.0) AND ARE REFERRED TO THE CENTRAL MERIDIAN OF UTM ZONE 17 (81° W LONGITUDE)

FOR BEARING COMPARISONS, THE FOLLOWING ROTATIONS WERE APPLIED:  
P - 0°04'40" CLOCKWISE.

### SURVEYOR'S CERTIFICATE

I CERTIFY THAT:  
1. THIS SURVEY AND PLAN ARE CORRECT AND IN ACCORDANCE WITH THE SURVEYS ACT, THE SURVEYORS ACT, THE LAND TITLES ACT AND THE REGULATIONS MADE UNDER THEM.  
2. THE SURVEY WAS COMPLETED ON THE XXth DAY OF JANUARY, 2021.

JANUARY 26, 2021

CHRISTOPHER JOHN OYLER  
ONTARIO LAND SURVEYOR

THIS PLAN OF SURVEY RELATES TO AOLS PLAN SUBMISSION FORM NUMBER XXXXXXXX.

**CLARKE**  
**SURVEYORS**  
A DIVISION OF SURVEYORS ON SITE INC.

Ontario Land Surveyors  
Consulting Surveyors  
2535 Lesperance Road  
Tecumseh, Ontario  
N9B 2X1  
Ph: (519) 258-4166  
Toll Free: 1-888-735-4166  
www.surveyorsonsite.com

DRAWN BY	SJP
CHECKED BY	CJO
JOB NO.	CS2020-091
FILE	L-TIL N-BFC-3
CAD FILE	CS2020-091_DEC 20