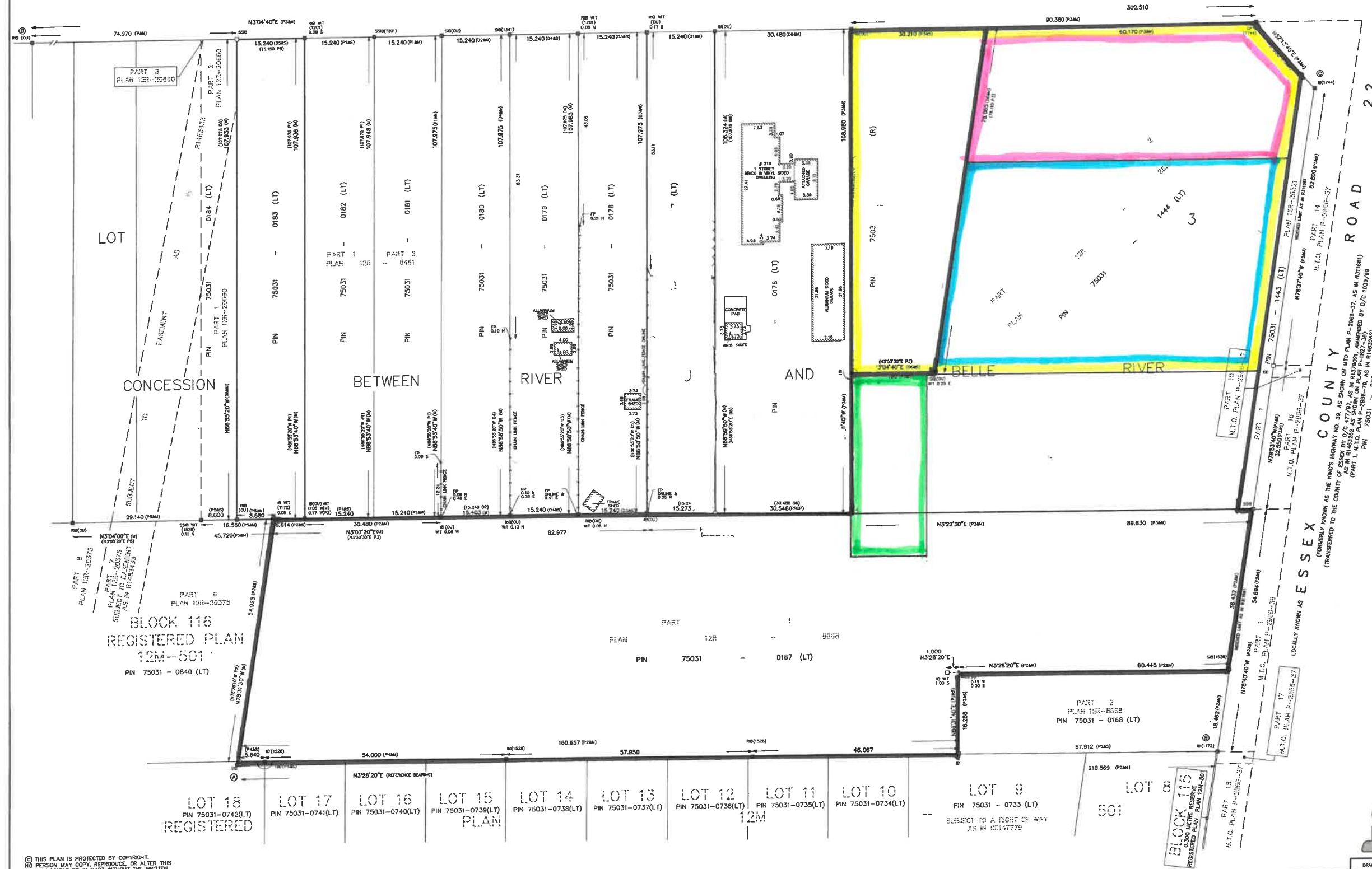


Table with 3 columns: POINT ID, NORTHING, EASTING. It lists coordinates for points A through D and includes a note about the accuracy of the coordinates.

PLAN OF SURVEY OF
PART OF LOT 3
CONCESSION BETWEEN RIVER
PUCE AND BELLE RIVER
GEOGRAPHIC TOWNSHIP OF MAIDSTONE
TOWN OF LAKESHORE
COUNTY OF ESSEX

SCALE 1 : 400 METRES
0 2 4 6 8 10 20 30 40
SURVEYORS ON SITE INC. ©

LOCALLY KNOWN AS RENAUD LINE ROAD
(ORIGINAL ROAD ALLOWANCE BETWEEN CONCESSIONS LAKESHORE RANGE & EAST PUCE RIVER)
PIN 75031 - 0270 (R)



- LEGEND
- MONUMENT PLANTED
 - MONUMENT FOUND
 - STANDARD IRON BAR
 - SHORT STANDARD IRON BAR
 - IRON BAR
 - CONCRETE PIN
 - ROUND IRON BAR
 - OUT CROSS
 - MEASURED
 - SET
 - PLAN 12R-5280
 - PLAN 12R-5461
 - PLAN 12R-5658
 - PLAN 12R-26521
 - REGISTERED PLAN 12M-501
 - PLAN 12R-20560
 - INSTRUMENT NUMBER R701679
 - INSTRUMENT NUMBER R1282661
 - INSTRUMENT NUMBER R1312114
 - INSTRUMENT NUMBER R1484552
 - INSTRUMENT NUMBER R1485735
 - INSTRUMENT NUMBER R1534287
 - WILLIAM BREWER O.L.S.
 - CLARKE SURVEYORS INC.
 - RICHARD MURRAY O.L.S.
 - VERHAEGEN, STUBBERFIELD, HARTLEY, BREWER, BEZAIRE INC.
 - VERHAEGEN, STUBBERFIELD, HARTLEY, BREWER, BEZAIRE INC.
 - ORIGIN UNKNOWN
 - SET BY PROPORTION
 - FENCE POST
 - WITNESS

NOTES

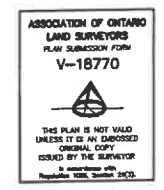
DISTANCES AND COORDINATES SHOWN ON THIS PLAN ARE IN METRES AND CAN BE CONVERTED TO FEET BY DIVIDING BY 0.3048.

DISTANCES ON THIS PLAN ARE HORIZONTAL GROUND DISTANCES AND CAN BE CONVERTED TO GRID DISTANCES BY MULTIPLYING BY THE AVERAGE COMBINED SCALE FACTOR OF 0.999833970.

BEARINGS ARE UTM GRID DERIVED FROM NETWORK RTK GPS OBSERVATIONS (TORNET) ON MONUMENTS (A) AND (B) AS SHOWN HEREON, HAVING A GRID BEARING OF N37°28'20"E, NAD83 (CSRS (2010.0)) AND ARE REFERRED TO THE CENTRAL MERIDIAN OF UTM ZONE 17 (81° W LONGITUDE).

FOR BEARING COMPARISONS, THE FOLLOWING ROTATIONS WERE APPLIED:

- P1, D1, D3, D4, D5 & D6 = 1°20'10" CLOCKWISE
- P5 = 1°17'30" CLOCKWISE
- P6 = 1°14'25" CLOCKWISE
- P3 = 0°02'00" COUNTER CLOCKWISE



SURVEYOR'S CERTIFICATE

I CERTIFY THAT:

- THIS SURVEY AND PLAN ARE CORRECT AND IN ACCORDANCE WITH THE SURVEYS ACT, THE SURVEYORS ACT, THE LAND TITLES ACT AND THE REGULATIONS MADE UNDER THEM.
- THE SURVEY WAS COMPLETED ON THE 17th DAY OF DECEMBER, 2021.

DECEMBER 20, 2021

CHRISTOPHER JOHN OYLER
ONTARIO LAND SURVEYOR



3560 WALKER ROAD
WINDSOR, ONTARIO
N9W 3S4
519-818-0767
www.sosurveyorsonsite.com

© THIS PLAN IS PROTECTED BY COPYRIGHT.
NO PERSON MAY COPY, REPRODUCE, OR ALTER THIS
PLAN IN WHOLE OR IN PART WITHOUT THE WRITTEN
AUTHORIZATION OF SURVEYORS ON SITE INC.