

PLAN OF SURVEY OF
PART OF LOT 4
CONCESSION EAST OF RUSCOM RIVER
GEOGRAPHIC TOWNSHIP OF ROCHESTER
TOWN OF LAKESHORE
COUNTY OF ESSEX

SCALE 1 : 250 METRES
0 1 2 3 4 5 10 20 30

SURVEYORS ON SITE INC.

THE INTENDED PLOT SIZE OF THIS PLAN IS 457mm IN HEIGHT BY 609mm IN WIDTH
WHEN PLOTTED AT A SCALE OF 1:250 METRES.

LEGEND

- MONUMENT PLANTED
- MONUMENT FOUND
- STANDARD IRON BAR
- SHORT STANDARD IRON BAR
- IRON BAR
- ROUND IRON BAR
- MEASURED
- SET
- PLAN 12R-28293
- PLAN 12R-28923
- PLAN 12R-28979
- WILLIAM J. SETTERINGTON LIMITED
- SURVEYORS ON SITE INC.

SCHEDULE				
PART	LOT	CONCESSION	PIN	AREA (m ²)
1	PART OF LOT 4	EAST OF RUSCOM RIVER	PART OF PIN 75051-0142 (LT)	36.10
2				777.44
3				371.78

GEOGRAPHIC TOWNSHIP OF ROCHESTER
PART 2 IS SUBJECT TO EASEMENT AS IN C946537.
PARTS 1 TO 3 (INCLUSIVE) COMPRISE PART OF PIN 75051-0142 (LT).

COORDINATES BELOW ARE DERIVED FROM NETWORK RTK GPS OBSERVATIONS (TOPNET) AND ARE REFERRED TO UTM ZONE 17, NAD83 (GSR) (2010.0).		
COORDINATES COMPLY WITH THE URBAN ABSOLUTE ACCURACY PER SEC. 14(2) OF O. REG. 216/10.		
POINT ID	NORTHING	EASTING
A	4683026.362	655928.327
B	4683101.618	365939.474
C	4683016.357	165980.802
COORDINATES CANNOT, IN THEMSELVES, BE USED TO RE-ESTABLISH CORNERS OR BOUNDARIES SHOWN ON THIS PLAN.		

NOTES

DISTANCES AND COORDINATES SHOWN ON THIS PLAN ARE IN METRES AND CAN BE CONVERTED TO FEET BY DIVIDING BY 0.3048.

DISTANCES ON THIS PLAN ARE HORIZONTAL GROUND DISTANCES AND CAN BE CONVERTED TO GRID DISTANCES BY MULTIPLYING BY THE AVERAGE COMBINED SCALE FACTOR OF 0.999798866.

BEARINGS ARE UTM AND DERIVED FROM NETWORK RTK GPS OBSERVATIONS (TOPNET) ON MONUMENTS (A) AND (B) AS SHOWN HEREON, HAVING A GRID BEARING OF N 25° 30' E, NAD83 (GSR) (2010.0) AND ARE REFERRED TO THE CENTRAL MERIDIAN OF UTM ZONE 17 (81° W LONGITUDE).

SURVEYOR'S CERTIFICATE

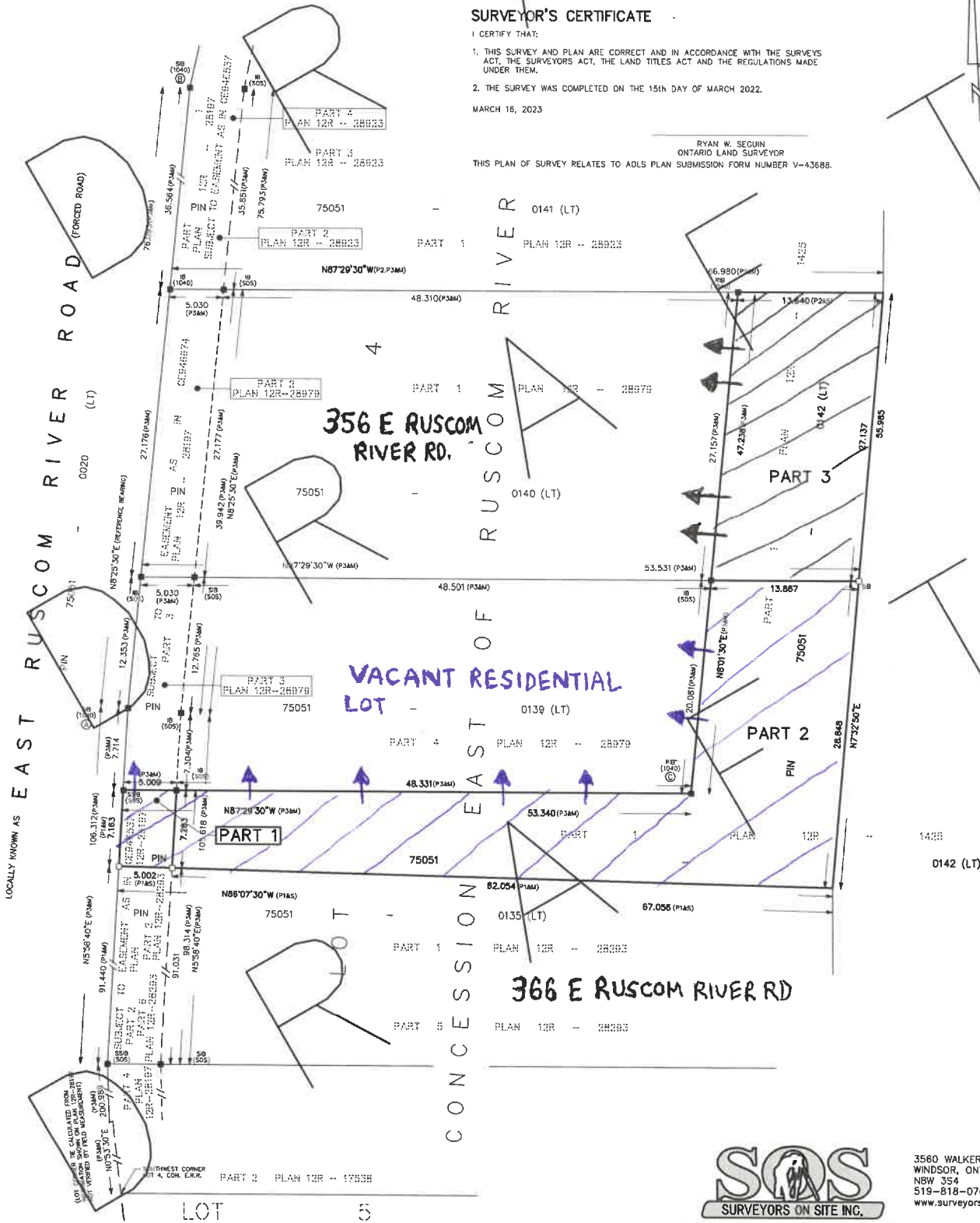
I CERTIFY THAT:

- THIS SURVEY AND PLAN ARE CORRECT AND IN ACCORDANCE WITH THE SURVEYS ACT, THE SURVEYORS ACT, THE LAND TITLES ACT AND THE REGULATIONS MADE UNDER THEM.
- THE SURVEY WAS COMPLETED ON THE 15th DAY OF MARCH 2022.

MARCH 16, 2023

RYAN W. SECUN
ONTARIO LAND SURVEYOR

THIS PLAN OF SURVEY RELATES TO AOLS PLAN SUBMISSION FORM NUMBER V-43688.



3560 WALKER ROAD
WINDSOR, ONTARIO
N9W 3S4
519-818-0767
www.surveyorsonsite.com